

# WE ARE FORSA

A COMPANY THAT MAKE  
YOUR DREAMS COME TRUE!

Who We Are & Our  
Solutions

 **FORSA**



*Photo: FORSA Factory & Stockyard in Guachane, Cauca-Colombia*

# WE ARE FORSA

COMPANY PROFILE



Great Human Talent

Sales Force: + 100

Personnel: + 800



Local

20%

Export

80%

## AN EXPORT DRIVEN COMPANY



Numerous Awards since 2005 Adicomex, Portafolio and Analdex



# WORLDWIDE PRESENCE IN OVER 30 COUNTRIES



MEXICO



COLOMBIA

Located in a Free Trade Zone



BRASIL



- |              |              |                 |                       |             |                    |               |
|--------------|--------------|-----------------|-----------------------|-------------|--------------------|---------------|
| 1. Colombia  | 6. Guadalupe | 11. Jamaica     | 16. Trinidad & Tobago | 21. Uruguay | 26. Cuba           | 31. Sudáfrica |
| 2. Guatemala | 7. Nicaragua | 12. Perú        | 17. Costa Rica        | 22. Angola  | 27. Arabia Saudita |               |
| 3. Ecuador   | 8. Rep. Dom. | 13. México      | 18. España            | 23. USA     | 28. Argentina      |               |
| 4. Martinica | 9. Venezuela | 14. El Salvador | 19. Brasil            | 24. Irán    | 29. Paraguay       |               |
| 5. Panamá    | 10. Aruba    | 15. Bolivia     | 20. Chile             | 25. Senegal | 30. St. Kitts      |               |



**OVER 6mio HOUSING  
UNITS BUILT WITH FORSA  
FORMWORK SYSTEMS WORLDWIDE**



**OVER 26ys  
COMMITTED TO THE  
FULFILLMENT OF  
CONSTRUCTION DREAMS**





# FORSA BUSINESS CULTURE



## • MISSION

We provide building solutions supported by innovation and top quality service with the aim of achieving the shortest construction execution time period and the highest ROI all based in our permanent and close proximity to our customers.



## • VISION

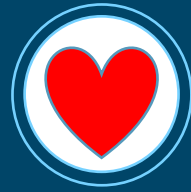
FORSA strive to continue developing and bringing forward efficient construction formwork solutions in American, African and Asian markets through our well-known service and innovation leadership.



Otto The Otter. Our Forsa pet

- **RELIABILITY**
- **MODESTY**
- **RESPECT**
- **INTEGRITY**
- **SERVICE ORIENTED**








# ... OUR PURPOSE

FORSA is committed to turn the dreams of housing ownership of millions into a reality. We share the joy of our associates, customers and community as a whole when these homes are handed over to them.

# A COMPANY THAT FULFILL DREAMS



  
 "I am **Arlen Valencia**  
 and I am PR♥UD  
**OF FORSA**   
 20ys, of working life in the  
 Company has allowed me to  
 acquired a house of my own"



    
 I AM PROUD  
**OF FORSA**  
 "I fulfilled the dream of a  
 house of my own through  
 the Company"

**Yolima Mejía**  
 General Support Service



  
 "My name is  
**Melba Orejuela**  
 and I am PR♥UD  
**OF FORSA**   
 It allowed me career  
 growth within the  
 Company"



  
 "I am **Luz Eneida Catacolí**  
 and I am PR♥UD  
**OF FORSA**  
 because thanks to the support of the  
 Company, I obtained a **degree in**  
**Business Management in Universidad**  
**Libre"** 



## Employment Creation in Cauca North



### During the last 3 years:

- Over **100** associates with Educational grants.
- Over **200** associates educated in various trainingships and certifications programs.
- Over **2.000** trainingships carried out in **Universidad Corporativa FORSA**.
- Permanent attendance to workshops and wellness activities.

Programs: 40k start up and Pilos Program as an employment opportunity for the second generation pool of all associates

# A COMPANY THAT LOOKS TO THE FUTURE

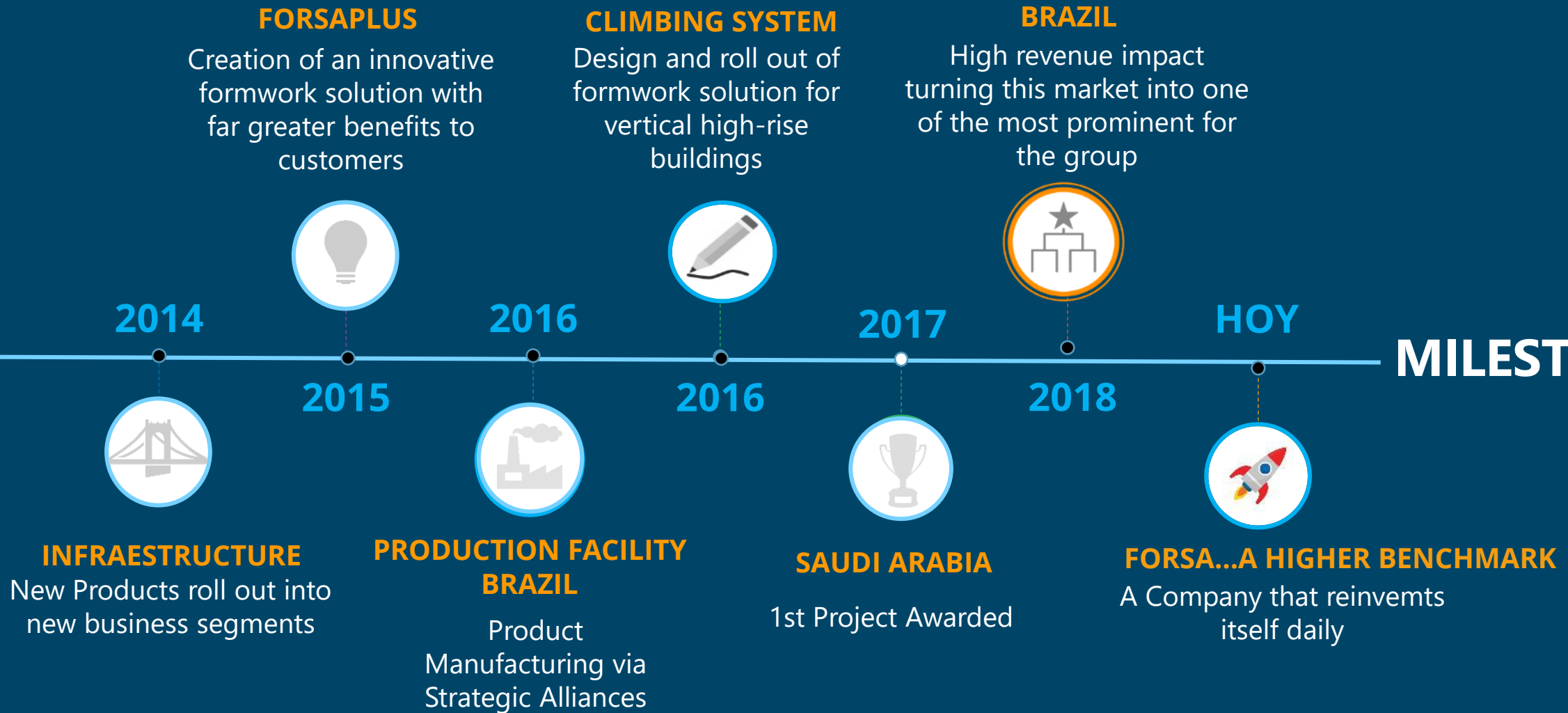


# MILESTONES





# MILESTONES



Full Support Throughout Project Conceptualization,  
Design and Hand Over

Engineering - Technical Support

Customized Design Service

Full Support Throughout Initial  
Pourings

Personnel Training

Post-sale Technical Support

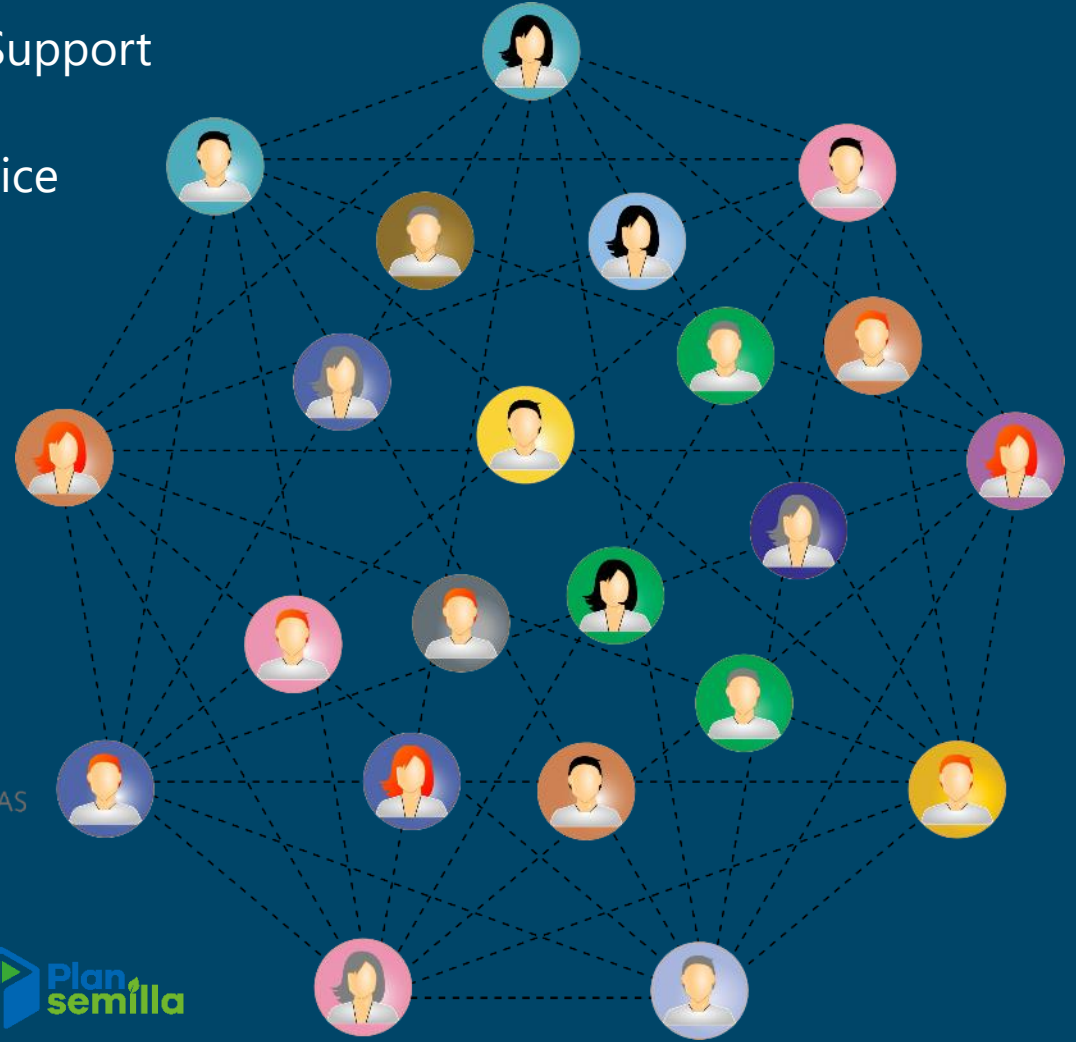
Technical Monitoring



Technical  
Trainingship



Claim Management &  
Customer Feedback



# WITH FORSA NO BUILDER IS ALONE

ADDED VALUE



# FORSA SOLUTIONS



- Single Housing / Estates
- Housing Buildings



- Offices
- Hoteles
- Shopping Centres
- Others: Schools/*Supermarkets/Hospitals/Jails/Universities, etc.*



- TRANSPORT: Airports, railways, harbours, metros, etc.
- ENERGY: Thermoelectrical, hidroelectric stations, etc.
- INDUSTRIAL
- WATER TREATMENT & CATCHMENT: black and grey water, potable water treatment, aqueducts, etc.
- SOCIAL INFRAESTRUTURE: cultural/sport/entertainment and convention centres, etc.

Applies in Colombia



## Aluminum Formwork Panels-2 ties for Housing Construction

Predictable Productivity due to faster construction execution, organised and gradual progression of the job sites activities and consequently higher margins due to direct savings without compromising quality.

### Benefits:

- Direct savings in labour
- Less accesories than traditional/outdated systems
- Savings in concrete finishing/remedial/rendering work and consumibles
- Exact and accurate concrete estructures providing higher rigidity and consistancy



# FORMWORK SOLUTION: FORSAPLUS



# SOLUTION: CLIMBING SYSTEM



## Formwork Solutions for high-rise buildings

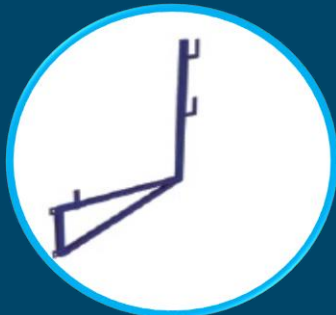
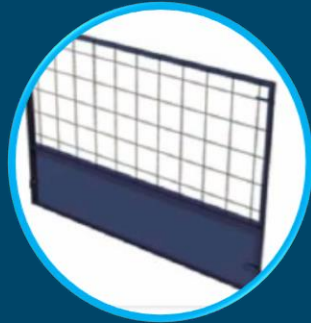
This system allows the **Climbing Scaffold** to be connected with our **Gang Configured Panel Formwork** with the aim of assembly/disassembly of large formwork areas with the use of a crane.

### Benefits:

- Increased Productivity
- Labour component reduction
- Better quality specially in serial configured projects
- Less accesories than traditional/outdated methods



# PRODUCT: SAFETY SYSTEM



## Safety System for Construction at Heights

FORSA offers to the Construction industry a Risk Free system for the handling of shuttering work.

The system **complies with the highest standards of design and manufacturing**, to assure the safety displacement at height of all personnel.

Our FORSA Safety System comprises of:

- Integrated Hand and Guardrails
- Walkway Platforms
- Scaffolding

**FORSA**

**PLY**

**SOLUTION:  
FORSA PLY  
STEEL**



## Panel Formwork Steel Frame & Plywood Liner, light and versatile for a wide range of applications

Due to the various panel sizes, multiple configurations are possible allowing sectional consecutive or monolithic castings.

### Benefits:

- Easy handling, assembly and transport
- Easy and fast maintenance
- Flexible and versatile panel configuration

 **FORSA**

[www.forsa.com.co](http://www.forsa.com.co)

# ACCESSORIES & CONSUMIBLES



- **Tie System Sleeve**
- **Slab & Wall Spacers** to maintain a constant distance between steel mesh shield and the formwork panel Surface contact.
- **Steel Scrapper** for the cleaning of panels.
- **Release Agent** FD-10 oil based and y ECO-10 water base.
- **Accesories** to connect, assemble and erection of panels as formwork solution.
- **Concrete Hopper**





OBRAS  
DESTACADAS  
FORSA

# RESIDENTIAL



Oviedo-Guatemala



Gran Reserva Paulista-Brasil



Renovación Urbana Colón-Panamá



Terra firme-Chile



Edificar-Ecuador



Phoenix Park-Jamaica



Sky Tower-Paraguay



Face Home Life-Brasil



El Club-Colombia







OBRAS  
DESTACADAS  
FORSA

INFRAESTRUCTURE



Pila Puente-Aserradero



Pila de Puente-Gualanday



Vigas Cabezal-Antioquia



Tanques Ptar-Sonso



Dovela Cero Puente-Aserradero



Caisson Viaducto-Villavicencio



Losas Aligeradas Jardín Plaza-Cali



Puente Velez-Antioquia



Anclajes Primavera







**With FORSA Integral Support,  
No Builder is Alone**

**THANK YOU!**



[www.forsa.com.co](http://www.forsa.com.co)

PRE-VR2 2019-05